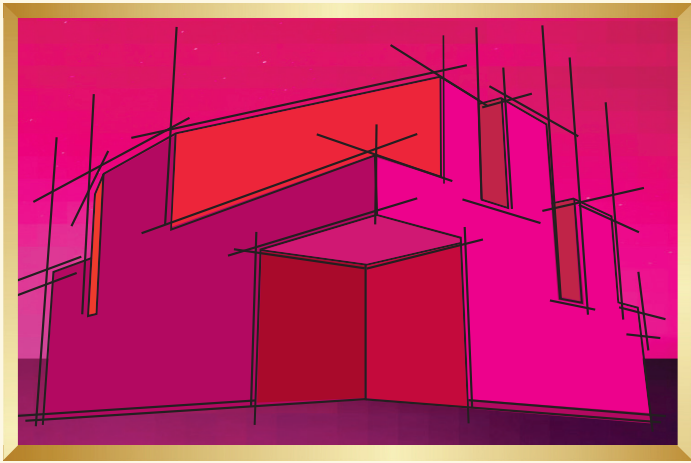


ARTFUL EVENING



GALA AUCTION

BENEFITING

BELLEVUE ARTS MUSEUM

Saturday, July 15, 2023



WELCOME TO ARTFUL EVENING

It is with great pleasure and excitement that we extend our warmest welcome to you all to celebrate 2023 Artful Evening.

We are deeply grateful for your presence tonight, as your support plays a vital role in supporting and the arts in our region. You are a vital part of our vision that recognizes the significance of art, craft and design in the world around us.

BAM continues to be a platform for prominent and emerging artists to share their unique visions. With exhibitions such as *Strange Weather: From the Collections of Jordan D. Schnitzer and His Family Foundation* and *Preston Wadley: Abstract Truth*, the Museum is a space to hold intentional and timely conversations about issues facing our world. Our mission to engage people in the power of art, craft and design is at the center of everything we do.

This evening is made even more special in honoring current BAM Trustee and Past President, Mitch Smith, AIA and MG2. Smith and MG2 are inspirational examples of how thoughtful and responsive design elevates built environments, impacting our perspective. Smith's leadership on the BAM Board of Trustees is exemplary and we are grateful for his impact on the history and evolution of the Museum.

Once again, welcome to the Bellevue Arts Museum's Artful Evening Gala—a celebration of art, culture, and the boundless possibilities of human imagination. The support raised at tonight's Artful Evening Gala supports the Museum's mission allowing us to continue to be a gathering place for the freedom of artistic expression, sharing diverse experiences, and creating thought-provoking exhibitions. We hope you join us July 28-30 for the 77th annual Bellevue Arts Museum Arts Fair from which the idea for the Museum originated.

On behalf of the Board of Trustees, Advisory Council, Docents and BAM Staff, thank you for joining us to celebrate arts in our community and to ensure the sustainability and success of the Bellevue Arts Museum for many years to come.

With gratitude,

E. MICHAEL WHITTINGTON | Executive Director

JAY PATHY | Board of Trustees, President

SPONSORS

THANKS TO YOU & OUR SPONSORS, BELLEVUE ARTS MUSEUM IS THE LEADING DESTINATION IN THE PACIFIC NORTHWEST FOR ART, CRAFT & DESIGN.

Your generosity helps showcase established and emerging artists, and makes our many community programs possible.

SUPPORTING SPONSORS



SILVER TABLE SPONSORS



Susan & Lonnie Edelheit

Adam & Helen Harmetz

Anne & Lee Kilcup

Rebecca & Jeffrey Lyman

Dr. Juile & Marvin Miller

Kate & Matt Scher

Trenton & Heather Harris

Leigh Ann & Russell More

Anna & Ian Olson

Dr. Jill Wakefield

E. Michael Whittington

Darlene & John Wilczynski

SPECIAL THANK YOU to our Artful Evening Committee, staff, docents, and volunteers who have worked to make this event possible.

HONORING



MITCH SMITH, AIA AND MG2

The Bellevue Arts Museum is proud to honor Mitch Smith, AIA and MG2 for their long-term support of the museum, and their transformational impact on the craft of architecture.

Smith's unwavering commitment to the advancement of the museum in the community as past President and on the BAM Board of Trustees has been particularly impactful.

An influential, organizational strategist, Mitch Smith, knows how to push boundaries and help others achieve new heights of success. As one of the first 20 employees to join MG2, Mitch quickly rose from Project Manager to CEO and Chairman of the Board by honing the craft of architecture. He perfectly balances delivery excellence with a design mindset, driving kinetic transformation long into the future.

By setting a clear vision, Mitch helps employees build meaningful connections between their work and their client's desire to advance their brand. It is this ability, along with his unfaltering candor, that cultivates a winning culture founded on the right people, strategies, and commitment to clients. When he isn't shaping the voice of MG2, you can find Mitch on his motorcycle, exploring the natural beauty of the Pacific Northwest with his family.

Smith has always been a big supporter of the arts community, finding commonalities and incorporating art into MG2 and the architectural world as much as he can. As an artist advocate and co-conspirator, Mitch is compelled by the Museum's robust exhibitions, and moved by the depth of artistic motivation, inspiration, and vision. He is champion for cultural and artistic inclusivity and leads BAM's Inclusion, Diversity, Equity, and Accessibility (IDEA) Committee and continues to lead these efforts at MG2.



BAM FAMILY

BOARD OF TRUSTEES

Jay Pathy, President	Joydeep Hazra
Darlene Wilczynski, Vice-President	Ryan James
Anne Kilcup, Secretary	Martin Liang
Robin Rothe, Co-Secretary	Rebecca A. Lyman
Trenton Harris, Treasurer	Dr. Julie Miller
Dr. Jill Wakefield, Immediate Past President	Leigh Ann More
Kate Casprowiak Scher	Anna Olson
Laura Dillaway	Joel Petersen
Adam Harmetz	Darcy Roennfeldt
	Mitch Smith

ADVISORY COUNCIL

Barbara Sherland, Chair
Patrick Burns
Tim Campbell
Valerie Collymore
Judith Cushman
James Miller
Robert Quick
Cheryl Ricketts
Brad Smith
Frances Taylor
Cappy Thompson

STAFF

E. Michael Whittington Executive Director	Mariely Lemagne Director of Development	Kathryn Reyes Teen Programs Educator
Deneen Blake Accounting Manager	Donna Lundquist Graphic Designer	Colleen Shelton Manager of Volunteer Programs
Zulma Brennan Registrar	Elizabeth Maurer Executive & Development Assistant	Jewel Slaughter Security Services Officer
Valerie Garcini Guest Services Lead	Jeremiah Meno Director of Operations & Guest Services	Paralee Thongkwan Education Coordinator
Carl Gellert Director of Education	Priyanka Parmanand Director of Marketing	Emily Tyler Marketing Coordinator
Natalie Hall Special Events Manager	Zoe Reid Head of Exhibition, Production & Installation	Sarah Wang Museum Store Lead
Bryan Hennig Security Services Officer		

AUCTION RULES

Upon entry, each guest will be given a bid number. To bid in the silent auction, write your bid number on the sheet next to the item you wish to bid on. To bid in the live auction, hold your bid card high with the number toward the auctioneer. Either the auctioneer or bid spotter can accept your bid.

By bidding in the live or silent auctions, each bidder agrees to the following auction rules:

- A bid acknowledged by the live auctioneer is a legal contract to purchase the item. As well, in the silent auction, designation of your submitted bid by the silent auction official as the top bid is a legal contract to purchase that silent auction item.
- Top bidders may pay for their items at the auction cashiering stations, which will open for regular service at the conclusion of the live auction. We encourage you to pay for your purchases only once, at the end of the live auction. Payment in full, however, is mandatory at the auction.
- Auction items will be awarded to one purchaser only. The top bid amount for an auction item will not be split among bidders who may have agreed to pay a portion of the top bid amount unless all of the payments for the auction are presented to the cashier at the time of payment.
- All purchases are final, and there will be no exchanges or refunds on items unless otherwise noted.
- The purchaser assumes the responsibility to locate and remove purchases from the Bellevue Arts Museum and Westin Bellevue premises this evening. Purchasers may claim certificate items at the Certificate Table.
- Physical items must be removed from the premises this evening. BAM volunteers will wrap your purchases to take home at no charge to you. Purchased items not retrieved this evening will be kept by Bellevue Arts Museum for a maximum of 30 days. Purchased items not collected by August 1 will be stored off-site at the buyer's expense. Arrangements to pick up unclaimed items after this evening must be made through Andrew Walsh, Registrar. Please note, BAM will not ship items.
- Bidders must **pre-register their credit card during registration**. Pre-registered guests will have paid receipts for their auction purchases delivered to them during the course of the auction, and final receipts mailed after the auction.
- The auctioneer reserves the right to reject any bid which is a minimal fractional advance over the prior bid. The auctioneer reserves the right to add or withdraw, without notice, items to or from the auction.
- We gladly accept payment by cash, check, Visa, MasterCard, or Discover. Please make your check payable to Bellevue Arts Museum. The Internal Revenue Service has granted Bellevue Arts Museum charitable organization status. We are, thus, a 501(c)(3) charitable organization and your payments are tax-deductible as a charitable contribution, only to the extent provided by law. Generally, you may deduct as a charitable contribution the amount you pay above the fair market value of the item. Please see your tax professional for deductibility for you.
- Unless otherwise noted, all goods and services must be claimed and used within one year of the auction date, and reservations for trips and parties must be mutually arranged with the donor unless otherwise noted.
- Bellevue Arts Museum has attempted to describe all catalogue items correctly, but all items are offered as-is, where-is. Bellevue Arts Museum neither warrants nor represents, and in no event shall be responsible for the correctness of the descriptions, genuineness, authorship, provenance, or condition of the items. No statement made in this catalogue or made orally at the auction or elsewhere shall be deemed as such a warranty for tax purposes or fair market value.
- In your auction catalogue, "Value" is an estimate of the retail value. Generally, we depend on the item donor to give us a reasonable estimate of the item's retail value. Items have not been appraised unless otherwise noted.
- Each person issued a bid number (bidder) assumes all risks and hazards related to the auction and items obtained at the auction. Each bidder agrees to hold harmless from any liability arising therefrom Bellevue Arts Museum, its elected and appointed officials, members and employees, the auctioneer(s), the auction company and its agents and employees, the event organizers, sponsors, and/or volunteers connected with the auction.

EVENING PROGRAM

5PM

COCKTAILS, HORS D'OEUVRES & SILENT AUCTION



EMCEE | JAY MARTIN JR.

Jay Martin Jr. is a Pacific Northwest native living on the eastside of Seattle with his wife of 17 years, Shannon, and their 3 beautiful children. Jay has found a way to uniquely intersect his passion for community and equality, with his 15 years of professional experience in theater and media. He's performed in productions like Joseph and The Technicolor Dreamcoat and Godspell, and interviewed Emmy award winning journalists, stylists and directors.

As a current captivating host of the television series PBS's KTSg Presents, and journalist for Crosscut Now in addition to hosting The driveprojectpodcast, Jay is regularly sharing stories that speak of passion, purpose, and possibility to a wide reach of diverse audiences.

5:45PM

SILENT AUCTION FIRST CLOSE

6:20PM

SILENT AUCTION SECOND CLOSE

6:30PM

SEATING BEGINS WESTIN GRAND BALLROOM

7PM

WELCOME

JAY PATHY | BOARD OF TRUSTEES, PRESIDENT

DINNER & LIVE AUCTION

WESTIN GRAND BALLROOM



AUCTIONEER | MATT LORCH

Working as an Emmy Award winning news anchor and reporter in some of the country's largest markets including Seattle, Boston, Miami, and Baltimore, Matt developed a style all his own. He combines dynamic communication, public speaking, and crowd engagement techniques to deliver truly memorable moments and drive fundraising.

MYSTERY WINE PULL



TRY YOUR LUCK AND PULL A WINNER | \$50 PER ENTRY

During cocktail hour, enter to pull a wine from the BAM Mystery Wine Pull located in the foyer outside the Westin Grand Ballroom for your private collection. Every bottle pulled is a winner rated at 90 points or higher. You never know what will be behind the wrap! Limited quantities, while supply lasts! Bottles must be picked up at check-out at the end of the evening.

Photo by John Murzaku on Unsplash

RAFFLE



PROVIDE YOUR BID NUMBER & ENTER TO WIN! | \$100 PER ENTRY

Every raffle ticket purchased brings you one step closer to winning this special prize.

A limited vintage magnum bottle of 1999 Montelena Estate Cabernet Sauvignon, Napa Valley, a \$500 gift certificate to El Gaucho, and a hand-crafted bronze Wulf Wine Stopper by 2023 Bellevue Arts Fair Artist, Tim (Tucker) Wolf.



GLASSYBABY CENTERPIECES



TAKE HOME A LIMITED EDITION GLASSYBABY MADE FOR ARTFUL EVENING 2023. NAMED MAGENTA MOON.

These one-of-a-kind hand-blown works of art continue the centuries old glassblowing craft. Collect this glassybaby as your own or give it as a gift to someone special. Each glassybaby comes with a hinged magnetic box and includes a palm wax tea light candle. Limited quantities available so act fast!

Reserve your glassybaby by adding your bid number to the centerpiece form on your table. Must be picked up at check-out.

LIVE AUCTION

THANK YOU FOR YOUR SUPPORT IN
FUNDING BAM'S UNIQUE EXHIBITIONS
& ESSENTIAL COMMUNITY PROGRAMS.



Microsoft and our employees are proud to support local arts organizations like Bellevue Arts Museum.

At Microsoft, our mission is to empower every person and every organization on the planet to achieve more. Through employee volunteer hours and gifts, cash grants, and technology donations, Microsoft is proud to support programs and organizations that address the needs of the people and communities throughout Washington State.



01

Napa Caves & Cabernets for 2

Calling all California wine lovers, this experience for two will not disappoint. Enjoy winery tour and tasting at Jarvis Estate, B Cellars Vineyards, and Rutherford Hill Winery Cave, with 6 hours of consecutive chauffeured luxury sedan service. Package includes a 3-night stay in a standard guest room at the Cambria, Marriott, Hilton, Embassy or similar accommodations.

VALUE: \$3,425

DONOR: Giveback XP Booking Services

RESTRICTIONS: VALENTINE'S DAY, PRESIDENT'S DAY, MOTHER'S DAY, BOTTLEROCK, NASCAR.

AT SONOMA RACEWAY, AND WEEKEND DATES IN SEPTEMBER AND OCTOBER. THANKSGIVING, CHRISTMAS AND NEW YEAR'S WEEKS. WEEKDAYS IN HARVEST SEASON (SEP/OCT) ARE EXTREMELY LIMITED AND MAY BE SUBJECT TO AN ADDITIONAL CHARGE. THIS ITEM MUST BE BOOKED A MINIMUM OF 60 DAYS IN ADVANCE AND SUBJECT TO AVAILABILITY (SHORTER REDEMPTION PERIODS MAY BE AVAILABLE). ALL PURCHASES ARE NONREFUNDABLE.

PACKAGES CANNOT BE RESOLD AND MUST OCCUR WITHIN TWO YEARS FROM DATE OF PURCHASE. GROUND TRANSPORTATION IS NOT INCLUDED UNLESS WHERE SPECIFIED ABOVE. WINE TOUR AND TASTING GRATUITY IS NOT INCLUDED.



02

St. George Stay & Play Golf Getaway for 4

Grab your golf buddies for 18 holes for this golf lover's dream in scenic St. George, Utah. Play 18 holes at The Ledges Golf Club, Copper Rock Golf Course, and Sand Hollow Championship Course, rated the #1 golf course in Utah for the past 9 years! Package includes a 4-night stay in a 3-4 bedroom at The Ledges or similar in St. George, UT.

VALUE: \$3,550

DONOR: Giveback XP Booking Services

RESTRICTIONS: MID-MARCH THROUGH MID-APRIL, FIRST 2 WEEKS OF OCTOBER. HOLIDAY WEEKS AND WEEKENDS HAVE LIMITED AVAILABILITY AND MAY BE SUBJECT TO ADDITIONAL FEES. ADDITIONAL BLACKOUT DATES MAY APPLY. THIS ITEM MUST BE BOOKED A MINIMUM OF 60 DAYS IN ADVANCE AND SUBJECT TO AVAILABILITY (SHORTER REDEMPTION PERIODS MAY BE AVAILABLE). ALL PURCHASES ARE NON-REFUNDABLE. PACKAGES CANNOT BE RESOLD AND TRAVEL MUST OCCUR WITHIN TWO YEARS FROM DATE OF PURCHASE.



03

Sounders Suite Life Package for 4

You and 3 friends will attend the Sounders vs. Portland game on September 2, 2023, in MG2's private suite at Lumen Field. You'll be in great company because Mitch Smith will be joining you! MG2 is providing food, beverages, and parking so you and your guests should have a fabulous time cheering on our Seattle Sounders!

VALUE: \$3,000

DONOR: MG2 CORPORATION

RESTRICTIONS: GOOD FOR THE AGREED UPON GAME IN THE 2023 SOUNDERS SEASON.

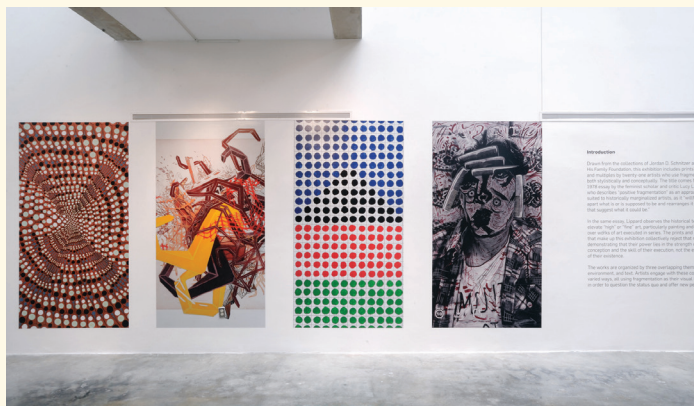


PHOTO: NATIONAL MUSEUM OF WOMEN IN THE ARTS, NEW YORK, NY

04

Positive Fragmentation: From the Collections of Jordan D. Schnitzer and His Family Foundation Private Reception & Tour Led by BAM Executive Director for 10

Tour Bellevue Arts Museum's upcoming exhibition, *Positive Fragmentation*, with up to 10 of your closest friends or colleagues. This after-hours private exhibition tour is led by BAM Executive Director, E. Michael Whittington, with wine and cheese reception included. The exhibition includes more than 100 works by 21 contemporary women artists who use fragmentation both stylistically and conceptually. Artists in this exhibition fragment, and often reassemble, elements including shape, color, perspective, text, idea, or stereotype. The exhibition includes artwork by Jenny Holzer, Louise Bourgeois, Wendy Red Star, Judy Chicago, Mickalene Thomas, Kara Walker, and more.

VALUE: \$1,500

DONOR: Bellevue Arts Museum

MUST BE PLANNED IN ADVANCE MONDAY-FRIDAY AT A MUTUALLY AGREED UPON DAY/TIME DURING THE EXHIBITION DATES OF OCTOBER 2023 THROUGH MARCH 2024.



05

Grand Canyon Eco Dome Glamping for 5

Grand Canyon National Park, founded in 1919, is one of the oldest national parks in the United States and is home to the awe-inspiring Grand Canyon, a 1-mile-deep gorge carved by the Colorado River. Seeing the enormous expanse of the Grand Canyon at sunrise or sunset is a Bucket List experience. Experience epic stargazing and witness spectacular sunrises and sunsets. Enjoy a stay in a Grand Canyon Sky Dome with a queen bed, large panoramic view window, A/C, luxury linens, plush towels, a modern private bathroom with rain shower, and wifi; it's an authentic glamping experience that offers luxe private domes in a stunningly beautiful mountain range.

VALUE: \$2,595

DONOR: Auction Packages

RESTRICTIONS: MID-MARCH THROUGH MID-APRIL, FIRST 2 WEEKS OF OCTOBER. HOLIDAY WEEKS AND WEEKENDS HAVE LIMITED AVAILABILITY AND MAY BE SUBJECT TO ADDITIONAL FEES. ADDITIONAL BLACKOUT DATES MAY APPLY. THIS ITEM MUST BE BOOKED A MINIMUM OF 60 DAYS IN ADVANCE AND SUBJECT TO AVAILABILITY (SHORTER REDEMPTION PERIODS MAY BE AVAILABLE). ALL PURCHASES ARE NON-REFUNDABLE. PACKAGES CANNOT BE RESOLD AND TRAVEL MUST OCCUR WITHIN TWO YEARS FROM DATE OF PURCHASE.



06

2023 US Open Tennis Championship for 2

See the greatest tennis event in the world with the Manhattan skyline as a backdrop at the 2023 US Open Championship. Sit in the Promenade level at the legendary Arthur Ashe Stadium with tickets for the Women's Finals on Saturday, September 9, 2023, and Men's Finals on Sunday, September 10, 2023. Also includes a 3-night stay in standard guest room accommodations at Marriott, Hilton, Hyatt or comparable accommodations.

VALUE: \$4,390

DONOR: Giveback XP Booking Services

RESTRICTIONS: ALL PURCHASES ARE NON-REFUNDABLE. PACKAGES CANNOT BE RESOLD. GROUND TRANSPORTATION IS NOT INCLUDED UNLESS WHERE SPECIFIED.



07

Private Collector's Dinner at Edelheit Residence for 6

Enjoy an intimate chef's dinner with friends at the home of collectors and longtime BAM Supporters, Susan and Lonnie Edelheit with co-hosts Anne and Lee Kilcup. This special evening includes a personal tour of the Edelheit's remarkable collection, 20 years in the making, featuring well known Pacific Northwest artists that encompass the best of art, craft and design. Musical accompaniment for this experience provided by Cornish College of the Arts.

VALUE: \$2,500

DONORS: Susan and Lonnie Edelheit, Anne and Lee Kilcup

RESTRICTIONS: DATE MUST BE ARRANGED IN ADVANCE WITH NOTICE
OFFER AVAILABLE IN THE MONTHS OF JUNE-NOVEMBER 2024.



08

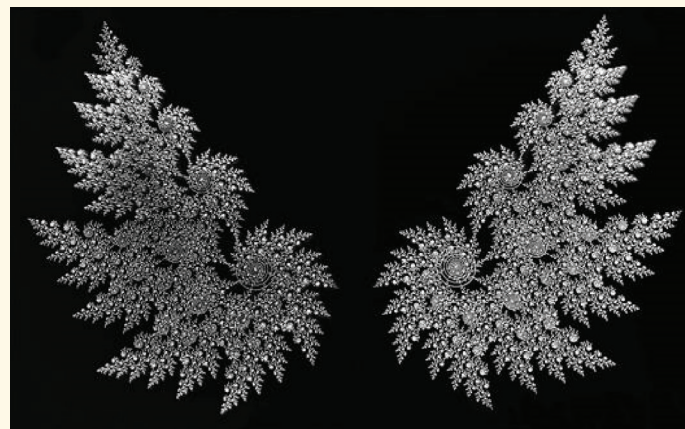
2024 Kentucky Derby – First Turn for 2

Save the Date for the 2024 Kentucky Derby. Enjoy 2 days of fun on Friday, May 3 and Saturday May 4 with two 2nd or 3rd floor Grandstand tickets! Enjoy in-track concessions for two with unlimited traditional Churchill Downs Mint Juleps, with VIP Fast Access pass entry. Includes a 3 night stay in standard guest room at a select Louisville accommodation and round trip ground transfers between your hotel and the fun. Includes one hat and one fascinator created by 2023 Arts Fair artist Jax Hatz Millinery so you can proudly display your West Coast flair at the Derby!

VALUE: \$6,305

DONOR: Giveback XP Booking Services

RESTRICTIONS: ALL PURCHASES ARE NON-REFUNDABLE. PACKAGES CANNOT BE RESOLD. GROUND TRANSPORTATION IS NOT INCLUDED UNLESS WHERE SPECIFIED.



09

Aegis (installation) Mixed Media artwork by artist ARice Studio | Yingri Guan

This piece is created by using generative algorithms and visualized through the acrylic glass to bring three-dimensional depth and texture. The goal is to provide viewers with feelings of ethereal protection. And establish spiritual and emotional connections through their interaction with the piece.

VALUE: \$12,000

DONOR: Yingri Guan

ARTIST: YINGRI GUAN
MATERIALS: MIXED MEDIA
DIMENSIONS: 32 IN X 24 IN X 3 IN, 5 LBS



10

Seabrook Beach Escape for 12

Enjoy 6 nights/7 days in this 4-bedroom, 6 bath, 3,200 SF ocean-view craftsman cottage located in the beach town of Seabrook. This vacation home sleeps up to 12, has a media room, fully equipped gourmet kitchen and outdoor living space. Your Pacific Ocean adventure awaits!

VALUE: \$7,000

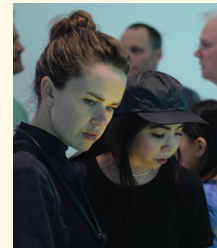
DONOR: MG2 Corporation

RESTRICTIONS: DATES MUST BE CONFIRMED BY DECEMBER 1, 2023, FOR YOUR 6-NIGHT STAY DURING 2024. OCCUPANCY BASED ON AVAILABILITY.

RAISE-THE-PADDLE

YOUR RAISE-THE-PADDLE DONATIONS DIRECTLY SUPPORT BAM'S MISSION AND PROGRAMS. FROM OUR NATIONALLY RECOGNIZED TEEN DOCENT PROGRAM, TO OUR ENGAGING EXHIBITIONS, TO BAM ARTS FAIR. WE ENGAGE OUR COMMUNITY ON A DAILY BASIS AND INVITE THEM TO CREATE AND DISCUSS ALONGSIDE ARTISTS AND ARTWORKS. BECAUSE OF YOUR SUPPORT, BAM IS ALWAYS NEW, ALWAYS DIFFERENT, ALWAYS EXCITING.

YOUR GIFT MAKES A DIFFERENCE.



GIVING LEVELS

\$20,000
\$15,000
\$10,000
\$5,000
\$2,500
\$1,000
\$500
\$250
\$100

ALL RAISE-THE-PADDLE DONATIONS ARE 100% TAX DEDUCTIBLE.

DESSERT DASH



- View the Dessert Dash table in the Westin Grand Ballroom.
- Go back to your table and write down your bid number and bid amount on the Dessert Dash form.
- Listen for the bidding prompt at the beginning of the Live Auction, all bid forms will be collected.
- The table with the most money raised will get first pick in the Dessert Dash, followed in order by the next highest bidders, until there are no desserts left.
- Friendly competition is encouraged!



11

Anderson Island Getaway

Escape to the southernmost island in Puget Sound for a weeklong getaway at a secluded cabin. This family friendly 3 bedrooms/2 baths home is a perfect wooded retreat. During your stay take time to explore this Anderson Island's many parks and breathtaking scenery.

VALUE: \$2,500

DONORS: Anna and Ian Olson

RESTRICTIONS: MUST BE PLANNED IN ADVANCE ON A MUTUALLY AGREEABLE DATE.



12

BAM Trustee Wine Cellar

Calling all wine lovers, you will enjoy this delightful array of fine wines furnished by the Bellevue Arts Museum Board of Trustees. 12 fine wines make a fine addition to your personal cellar.

VALUE: \$1,200

DONOR: BAM BOARD OF TRUSTEES

RESTRICTIONS: PACKAGE CANNOT BE CONSUMED AT EVENT AND MUST BE PICKED UP AT CHECK-OUT.



13

Camano Island Getaway with Crab Curry Feast for 12

Eight people will spend a weekend, two nights/three days, in Camano Island at a minimalist designed, sleek, modern, waterfront 3+1BR/3.5 bath home.

During your stay, invite four more of your friends, and enjoy a culinary feast of Crab Curry cooked by Dr. Sumathy Pathy, wife of BAM Board of Trustees President Jay Pathy.

The cabin was designed by a world-renowned architect, sits on a five-acre waterfront property in the quieter southwest part of the island. Complete with floor-to-ceiling windows with an artistic touch, may inspire you to linger indoors.

VALUE: \$3,200

DONORS: Sumathy and Jay Pathy

RESTRICTIONS: MUST BE PLANNED IN ADVANCE ON A MUTUALLY AGREEABLE DATE.



14

2024 Lake Chelan Winterfest Holiday for 10 | Donate \$50 to Win

Turn in your bid card at \$50 to be entered into a drawing for a chance to win!

Celebrate the season and enjoy Lake Chelan Winterfest with Peterson's Resort as your home base for 5 Days/4 Nights at a large 3 story waterfront townhome that comfortably sleeps 10. Enjoy ice sculptures, fireworks, the infamous ice bar, the polar bear splash, live music, and ice slide, and more at this beloved winter festival. Centrally located within five minutes walking distance to the all the action including restaurants, bars, Winterfest Shopping. Don't forget to pack your skis, Mission Ridge is nearby!

VALUE: \$2,500

DONORS: Shelly Sharma and Naveen Kumar

RESTRICTIONS: OFFER ONLY VALID JANUARY 11-15, 2024 AND INCLUDES MLK DAY ON JANUARY 15.



At Amazon, we believe harnessing the power of art can **help build strong, healthy neighborhoods.**

We're proud to partner with the **Bellevue Arts Museum Arts Fair** as they contribute to a more inclusive and accessible local arts community for all.

To learn more, visit aboutamazon.com

amazon

SILENT AUCTION FIRST CLOSE

5:45PM

101

THE GORGEOUS SPRING MOUNTAINS AFTER RAIN

Vivian Chao

Sumi watercolor on rice paper

VALUE: \$700



102

SIMPLE TREASURES

Eleni Duffy

Ceramics

VALUE: \$425



103



RHUBARB EMERGING IN THE SPRING

David Fishman

Photograph

VALUE: \$300

104



3 SMALL SCALE METAL SCULPTURES

Brian C. Walters II

Metal

VALUE: \$1,800

105



TEAPOT SET IN BOX

Fiona Jiao

Ceramics

VALUE: \$500

106



RESIN AND SILVER PIERCED EARRINGS

Tania Gleave

Jewelry

VALUE: \$145

107



ISLAND TIME PAPER-WEIGHT

Joachim McMillan

Glass

VALUE: \$250 en Jones

108



DIGBY ISLAND

Steve Jensen

Mixed Media

VALUE: \$1,500 en

109



SHY LEGS

Tim (Tucker) Wolf

Bronze

VALUE: \$275

SILENT AUCTION SECOND CLOSE

6:20PM

110

TEAPOT SET IN BOX

Fiona Jiao



Ceramics

VALUE: \$500

112

THREADED VESSEL

Matt Kolbrener



Glass

VALUE: \$350

111

UNMENTIONABLES EARRINGS

Ling-Yen Jones



Sliver

VALUE: \$98

113

18K GOLD AND SILVER EARRINGS & NECKLACE SET

Sana Doumet



Jewelry

VALUE: \$2,300

114



FELICITY

Chelstin Ross

Watercolor on Paper

VALUE: \$940

116



HARMONY

Tim (Tucker) Wolf

Bronze Sculpture

VALUE: \$600

115



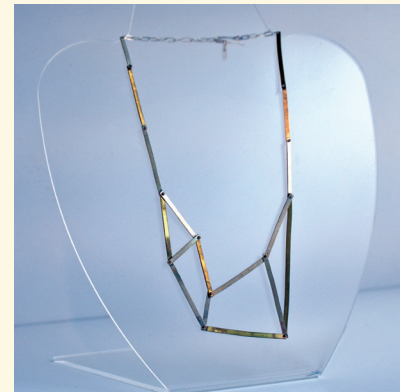
OWL WITH CHRYSANTHEMUM VASE

Shizuko & Toshi Schichishima

Ceramics

VALUE: \$295

117



SILVER NECKLACE

Jennifer Bennett | Di Luce
Design

Silver

VALUE: \$178

118



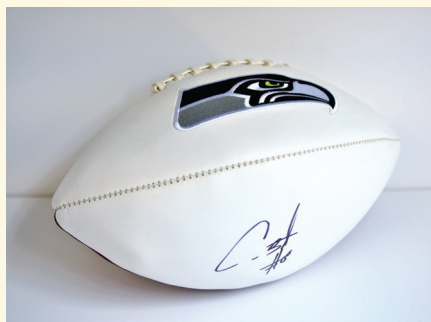
AWAJI

Scott Chriest

Acrylic on canvas

VALUE: \$2,700

119



AUTOGRAPHED
FOOTBALL SIGNED
BY #8 COBY BRYANT

Seattle Seahawks

VALUE: \$250



Bring your creative
ideas to life at
Pratt Fine Arts Center

1902 S. Main St. Seattle, WA 98144
pratt.org

Pratt
Fine Arts Center



SILENT AUCTION ITEM DONORS



A strong community makes all the difference.

Bringing the community together helps all of us move forward. At PNC, we proudly support the people, events and institutions that help to strengthen the places we call home and the world around

Jennifer Daquiz Hare
jennifer.hare@pnc.com
206-274-3040
www.pnc.com



©2023 The PNC Financial Services Group, Inc. All rights reserved. PNC Bank, National Association, Member FDIC
BR ENR PDF 0323-090-223/181

- ARiceStudio (Yingri Guan)
- Jennifer Bennett | Di Luce Design
- Vivian Chao
- Scott Chriest
- Sana Doumet
- Eleni Duffy
- David Fishman
- Tania Gleave
- Steve Jensen
- Fiona Jiao
- Ling-Yen Jones
- Anne and Lee Kilcup
- Matt Kolbrener
- Joachim McMillan
- Chelstin Ross
- Shizuko and Toshi Schichishima
- Seattle Seahawks
- Brian Walters II
- Tim (Tucker) Wolf

77 Years of Crafting Community

KIDS FAIR AT BAM

BAMboozle Stage

Food Trucks

FREE ADMISSION TO BAM

Shop from 300+ Artists

Live Performances

BELLEVUE ARTS MUSEUM

ARTS FAIR

JULY 28 – 30, 2023

**AT BELLEVUE ARTS MUSEUM
AND BELLEVUE SQUARE**

Thank you to our sponsors & partners.

Presenting sponsors:



THE BELLEVUE
COLLECTION

amazon



Microsoft



Coca-Cola
SWIRE COCA-COLA, USA

BIE|CU



4
CULTURE

Media partners: **The Seattle Times**

OKCTS9

425
MAGAZINE

ART | CRAFT | DESIGN

BELLEVUE ARTS MUSEUM

bellevuearts.org/artsfair

GIVE YOUR GUESTS THE BELLEVUE ARTS MUSEUM EXPERIENCE.

PLAN YOUR
NEXT CORPORATE
GATHERING AT THE
MOST ARTFUL VENUE
ON THE EASTSIDE.

- Catering & AV
- Meeting Facilities
- Engaging Art
- Free Parking

TO BOOK CONTACT:
Natalie Hall
Special Events Manager
425.519.0745 | privateevents@bellevuearts.org

ART | CRAFT | DESIGN
BELLEVUE ARTS MUSEUM

bellevuearts.org

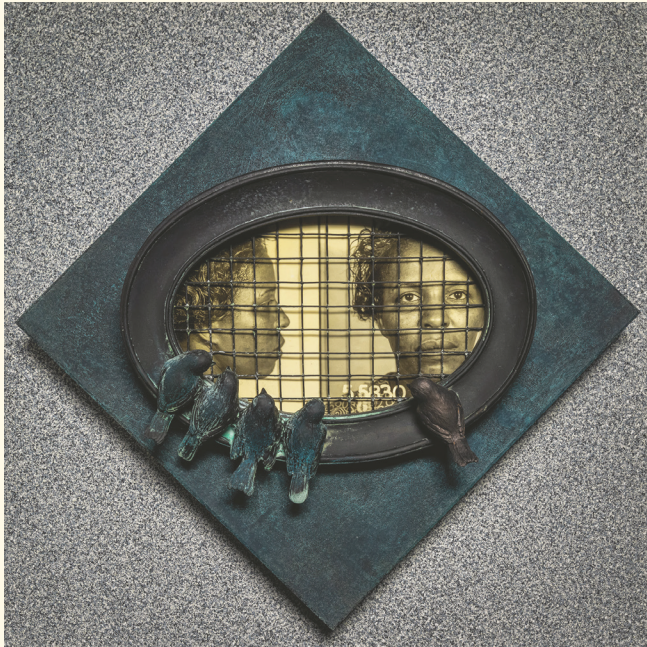
NOTES



NOW ON VIEW

AT BELLEVUE ARTS MUSEUM

THRU
10/8/23



PRESTON WADLEY: ABSTRACT TRUTH

Preston Wadley is Professor Emeritus of Fine Arts at Cornish College of the Arts. This exhibition features about thirty of his art books, as well as related photographs. Wadley's work focuses on the themes of race, identity, local history, and the history of photography. *Think of your eyes as ears* is a phrase Wadley uses often in his work, saying "think of your eyes as ears—I'm talking to you," meaning he wants viewers to engage with his work on more than just a visual level. Each book tells a story, and he wants you to listen.

Preston Wadley: Abstract Truth is organized by Bellevue Arts Museum and Preston Wadley.

Images (left to right): Preston Wadley, *I've Got Dreams to Remember*, 2019–2022, Photo: Courtesy of the artist; Kehinde Wiley, *Marechal Floriano Peixoto II*, from the series *The World Stage: Brazil*, 2012, Collection of the Jordan D. Schnitzer Family Foundation. Photo: Aaron Wessling Photography.

THRU
8/20/23



STRANGE WEATHER: FROM THE COLLECTIONS OF JORDAN D. SCHNITZER AND HIS FAMILY FOUNDATION

Strange Weather features artworks which illuminate and reframe the boundaries of bodies and the environment. The exhibition spans five decades from 1977–2020, and are drawn together for how they creatively call attention to the impact and history of forced migrations, industrialization, global capitalism, and trauma on humans and the contemporary landscape. The influential and well-known artists in the exhibition utilize a range of aesthetic strategies, including abstraction, portraiture, figurative painting, landscape, and installation, to explore the current atmospheric strangeness.

Strange Weather: From the Collections of Jordan D. Schnitzer and His Family Foundation is curated by Dr. Rachel Nelson, Director, Institute of the Arts and Sciences, UC Santa Cruz and Professor Jennifer González, History of Art and Visual Culture, UC Santa Cruz, with assistance of Madison Treece. The exhibition was organized in partnership with the UC Santa Cruz Institute of Arts, Santa Cruz Museum of Art and History, and the Jordan Schnitzer Family Foundation. Bellevue Arts Museum is generously supported by its donors and members.



THANK YOU

FOR SUPPORTING TONIGHT'S GALA

SEE YOU AT BAM ARTS FAIR
JULY 28 – 30, 2023